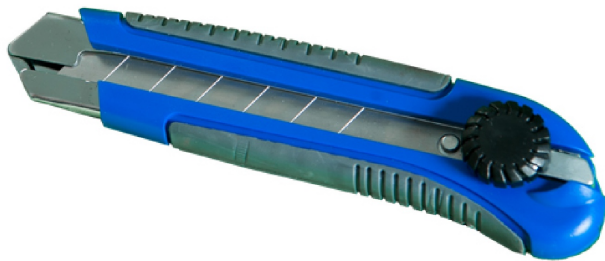


Technical sheet

Ref. 155584

Snap-off blade cutter, retractable



Utility knives are an essential for all small cutting jobs.

FEATURES

Comfortable to work with thanks to the bi-material handle 25 mm wide snap-off blade

SPECIFICATIONS

Lenght (mm)	30
Width (mm)	180
Height (mm)	45
Weight (kg)	0,124

Technical description

Made of steel and PVC for extra robustness.
Bi-material handle for a better grip and anti-slip.
25 mm wide snap-off blade to remove when it is worn.
Thumbwheel blade locking system. Work safely when cutting.

Actions : To cut

Trades : Slate / Framework / Waterproofing / Metal /
Tile